

Project:

**Purley Leisure Centre, Croydon**

**Asset Register**

Asset Reference:

**G.M.1**

Inspection Date:

**14.03.19**

Location:

Plant Room - Room 12

Level:

00 - Ground Floor

Equipment / Plant Ref:

Filter tanks (redundant)

Model Type:

This was previously used when system was on Ozone. Made redundant when UV was installed.

Quantity:

1 No.

Manufacturer:

Barr & Wray

Serial No:

Not available



Condition Rating:

See section 1.4.1 for grading details

Priority Grading:

See Section 1.4.2 for details

Economic Life:

**20** Year

From new/installation assuming regular servicing/maintenance

Predicated Future Life:

~ Years

Comments:

**No evident change since last survey in 2015**

Project:

**Purley Leisure Centre, Croydon**

**Asset Register**

Asset Reference:

**G.M.11**

Inspection Date:

**14.03.19**

Location:

**Plant Room - Room 12**

Level:

**00 - Ground Floor**

Equipment / Plant Ref:

**Pool filtration circulating pumps close coupled 7.5kw**

Model Type:

**Main pool**

Quantity:

**2**

**No.**

Manufacturer:

**Lowara - PLM**

Serial No:

**Not available**



Condition Rating:

**Grade C**

*See section 1.4.1 for grading details*

Priority Grading:

**Priority 3**

*See Section 1.4.2 for details*

Economic Life:

**20**

**Year**

*From new/installation assuming regular servicing/maintenance*

Predicated Future Life:

**3 to 5**

**Years**

Comments:

**No evident change since last survey in 2015**

Project:

**Purley Leisure Centre, Croydon**

**Asset Register**

Asset Reference:

**G.M.12**

Inspection Date:

**14.03.19**

Location:

**Plant Room - Room 12**

Level:

**00 - Ground Floor**

Equipment / Plant Ref:

**Pool filtration circulating pumps close coupled 7.5kw**

Model Type:

**Teaching pool**

Quantity:

**2**

**No.**

Manufacturer:

**Lowara - PLM**

Serial No:

**Not available**



Condition Rating:

**Grade C**

See section 1.4.1 for grading details

Priority Grading:

**Priority 3**

See Section 1.4.2 for details

Economic Life:

**20**

Year

From new/installation assuming regular servicing/maintenance

Predicated Future Life:

**3 to 5**

Years

Comments:

**No evident change since last survey in 2015**

Project:

**Purley Leisure Centre, Croydon**

**Asset Register**

Asset Reference:

**G.M.15**

Inspection Date:

**14.03.19**

Location:

**Plant Room - Room 12**

Level:

**00 - Ground Floor**

Equipment / Plant Ref:

**Control panel to pumps 1-4 circulating**

Model Type:

Quantity:

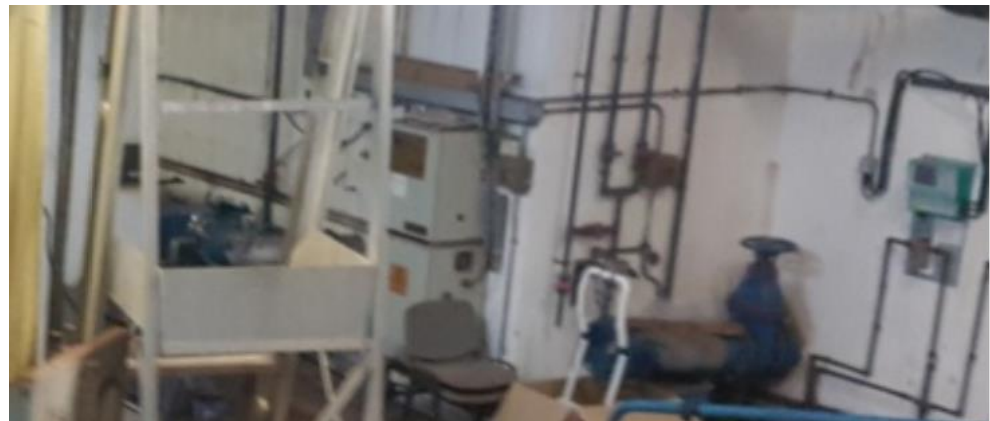
**1**

No.

Manufacturer:

Serial No:

**Not available**



Condition Rating:

**Grade B**

See section 1.4.1 for grading details

Priority Grading:

**Priority 4**

See Section 1.4.2 for details

Economic Life:

**20**

Year

From new/installation assuming regular servicing/maintenance

Predicated Future Life:

**2 to 5**

Years

Comments:

**No evident change since last survey in 2015**

**The panel is coming to the end of its economical life. It is operating currently.**

Project:

**Purley Leisure Centre, Croydon**

**Asset Register**

Asset Reference:

**G.M.18**

Inspection Date:

**14.03.19**

Location:

Plant Room - Room 12

Level:

00 - Ground Floor

Equipment / Plant Ref:

Topline water chemistry - Main & small pool control system monitoring panels

Model Type:

Quantity:

2

No.

Manufacturer:

Topline

Serial No:



Condition Rating:

**Grade B**

See section 1.4.1 for grading details

Priority Grading:

**Priority 3**

See Section 1.4.2 for details

Economic Life:

**20**

Year

From new/installation assuming regular servicing/maintenance

Predicated Future Life:

Years

Comments:

**No evident change since last survey in 2015**

Project:

**Purley Leisure Centre, Croydon**

**Asset Register**

Asset Reference:

G.M.19

Inspection Date:

14.03.19

Location:

Plant Room - Room 12

Level:

00 - Ground Floor

Equipment / Plant Ref:

Diaphragm metering pump direct drive

Model Type:

Encore 100

Quantity:

1

No.

Manufacturer:

Serial No:

9018015

Condition Rating:

See section 1.4.1 for grading details

Priority Grading:

See Section 1.4.2 for details

Economic Life:

20

Year

From new/installation assuming regular servicing/maintenance

Predicated Future Life:

Years

Comments:

**No evident change since last survey in 2015**

Project:

**Purley Leisure Centre, Croydon**

**Asset Register**

Asset Reference:

**G.M.2**

Inspection Date:

**14.03.19**

Location:

Plant Room - Room 12

Level:

00 - Ground Floor

Equipment / Plant Ref:

Filter tank A

Model Type:

Sand Filter Vessel for both Pools

Quantity:

1 No.

Manufacturer:

Barr & Wray

Serial No:

Not available



Condition Rating:

**Grade B**

See section 1.4.1 for grading details

Priority Grading:

**Priority 4**

See Section 1.4.2 for details

Economic Life:

**20** Year

From new/installation assuming regular servicing/maintenance

Predicated Future Life:

**5** Years

Comments:

**No evident change since last survey in 2015**

**To be serviced annually by Pool Filtration specialist company  
Sand to be replaced every 3 to 5 years.**

Project:

**Purley Leisure Centre, Croydon**

**Asset Register**

Asset Reference:

**G.M.20**

Inspection Date:

**14.03.19**

Location:

Plant Room - Room 12

Level:

00 - Ground Floor

Equipment / Plant Ref:

Direct drive foot bath pump

Model Type:

Small circulation pump

Quantity:

1

No.

Manufacturer:

Serial No:

~

Condition Rating:

See section 1.4.1 for grading details

Priority Grading:

See Section 1.4.2 for details

Economic Life:

**20**

Year

From new/installation assuming regular servicing/maintenance

Predicated Future Life:

Years

Comments:

**No evident change since last survey in 2015**



Project:

**Purley Leisure Centre, Croydon**

**Asset Register**

Asset Reference:

**G.M.22**

Inspection Date:

**14.03.19**

Location:

**Plant Room - Room 12**

Level:

**00 - Ground Floor**

Equipment / Plant Ref:

**Chemical pool dosing area bund tanks**

Model Type:

Quantity:

**2** No.

Manufacturer:

Serial No:



Condition Rating:

**Grade B**

See section 1.4.1 for grading details

Priority Grading:

**Priority 3**

See Section 1.4.2 for details

Economic Life:

**20** Year

From new/installation assuming regular servicing/maintenance

Predicated Future Life:

**2 to 5** Years

Comments:

**No evident change since last survey in 2015**

Project:

**Purley Leisure Centre, Croydon**

**Asset Register**

Asset Reference:

**G.M.23**

Inspection Date:

**14.03.19**

Location:

**Plant Room - Room 12**

Level:

**00 - Ground Floor**

Equipment / Plant Ref:

**Sodium hypochlorite dosing / meter set**

Model Type:

Quantity:

**1** No.

Manufacturer:

Serial No:



Condition Rating:

**Grade B**

See section 1.4.1 for grading details

Priority Grading:

**Priority 3**

See Section 1.4.2 for details

Economic Life:

**20** Year

From new/installation assuming regular servicing/maintenance

Predicated Future Life:

**2 to 5** Years

Comments:

**No evident change since last survey in 2015**

Project:

**Purley Leisure Centre, Croydon**

**Asset Register**

Asset Reference:

**G.M.24**

Inspection Date:

**14.03.19**

Location:

**Plant Room - Room 12**

Level:

**00 - Ground Floor**

Equipment / Plant Ref:

**Hypochloric mixture dosing / meter set**

Model Type:

Quantity:

**1** No.

Manufacturer:

Serial No:



Condition Rating:

See section 1.4.1 for grading details

Priority Grading:

See Section 1.4.2 for details

Economic Life:

**20** Year

From new/installation assuming regular servicing/maintenance

Predicated Future Life:

 Years

Comments:

**No evident change since last survey in 2015**

Project:

**Purley Leisure Centre, Croydon**

**Asset Register**

Asset Reference:

**G.M.26**

Inspection Date:

**14.03.19**

Location:

**Plant Room - Room 12**

Level:

**00 - Ground Floor**

Equipment / Plant Ref:

**D2 CWS to emergency shower / eye wash**

Model Type:

**~**

Quantity:

**1** No.

Manufacturer:

**~**

Serial No:

**Not available**



Condition Rating:

**Grade B**

See section 1.4.1 for grading details

Priority Grading:

**Priority 4**

See Section 1.4.2 for details

Economic Life:

**20** Year

From new/installation assuming regular servicing/maintenance

Predicated Future Life:

**5** Years

Comments:

**No evident change since last survey in 2015  
No test where carried out during the inspection**

Project:

**Purley Leisure Centre, Croydon**

**Asset Register**

Asset Reference:

**G.M.3**

Inspection Date:

**14.03.19**

Location:

Plant Room - Room 12

Level:

00 - Ground Floor

Equipment / Plant Ref:

Filter tank B

Model Type:

Sand Filter Vessel for both Pools

Quantity:

1 No.

Manufacturer:

Barr & Wray

Serial No:

Not available



Condition Rating:

**Grade B**

See section 1.4.1 for grading details

Priority Grading:

**Priority 4**

See Section 1.4.2 for details

Economic Life:

**20** Year

From new/installation assuming regular servicing/maintenance

Predicated Future Life:

**~** Years

Comments:

**No evident change since last survey in 2015**

**To be serviced annually by Pool Filtration specialist company.  
Sand to be replaced every 3 to 5 years.**

Project:

**Purley Leisure Centre, Croydon**

**Asset Register**

Asset Reference:

**G.M.48**

Inspection Date:

**14.03.19**

Location:

**Plant Room - Room 12**

Level:

**00 - Ground Floor**

Equipment / Plant Ref:

**Air blower unit and close coupled motor drive**

Model Type:

**Direct drive**

Quantity:

**1**

**No.**

Manufacturer:

**Bora pumps**

Serial No:

**Not available**



Condition Rating:

**Grade B**

See section 1.4.1 for grading details

Priority Grading:

**Priority 4**

See Section 1.4.2 for details

Economic Life:

**20**

Year

From new/installation assuming regular servicing/maintenance

Predicated Future Life:

**5**

Years

Comments:

**No evident change since last survey in 2015**

Project:

**Purley Leisure Centre, Croydon**

**Asset Register**

Asset Reference:

**G.M.6**

Inspection Date:

**14.03.19**

Location:

**Plant Room - Room 12**

Level:

**00 - Ground Floor**

Equipment / Plant Ref:

**Hanova ultra violet water treatment unit**

Model Type:

Quantity:

**1**

No.

Manufacturer:

**Hanova**

Serial No:

**Not available**



Condition Rating:

**Grade B**

See section 1.4.1 for grading details

Priority Grading:

**Priority 4**

See Section 1.4.2 for details

Economic Life:

**20**

Year

From new/installation assuming regular servicing/maintenance

Predicated Future Life:

**5**

Years

Comments:

**No evident change since last survey in 2015**

**To be serviced annually by Pool Filtration specialist company  
Run time hours indicated at time of inspection - 96,423 hrs (suggest counter has not been reset after replacement).**

Project:

**Purley Leisure Centre, Croydon**

**Asset Register**

Asset Reference:

**G.M.7**

Inspection Date:

**14.03.19**

Location:

**Plant Room - Room 12**

Level:

**00 - Ground Floor**

Equipment / Plant Ref:

**Heat exchange unit main pool**

Model Type:

**Tube and shell type heat exchange unit**

Quantity:

**1**

**No.**

Manufacturer:

**Bowman Sern**

Serial No:

**3793**



Condition Rating:

**Grade B**

See section 1.4.1 for grading details

Priority Grading:

**Priority 3**

See Section 1.4.2 for details

Economic Life:

**15**

Year

From new/installation assuming regular servicing/maintenance

Predicated Future Life:

**3 ot 5**

Years

Comments:

**No evident change since last survey in 2015**

**No signs of leaks from the PHX's. They are not insulated.**



Project:

**Purley Leisure Centre, Croydon**

**Asset Register**

Asset Reference:

**G.M.8**

Inspection Date:

**14.03.19**

Location:

**Plant Room - Room 12**

Level:

**00 - Ground Floor**

Equipment / Plant Ref:

**Heat exchange unit learner pool**

Model Type:

**Tube and shell type heat exchange unit**

Quantity:

**1**

**No.**

Manufacturer:

**Bowman**

Serial No:

**~**



Condition Rating:

**Grade B**

See section 1.4.1 for grading details

Priority Grading:

**Priority 3**

See Section 1.4.2 for details

Economic Life:

**15**

Year

From new/installation assuming regular servicing/maintenance

Predicated Future Life:

**3 to 5**

Years

Comments:

**No evident change since last survey in 2015**

**No signs of leaks from the PHX's. They are not insulated.**

Project:

**Purley Leisure Centre, Croydon**

**Asset Register**

Asset Reference:

**6.M.11**

Inspection Date:

**14.03.19**

Location:

Cold Water Tank Room

Level:

06 - Sixth Floor

Equipment / Plant Ref:

Chlorine dioxide dosage system

Model Type:

VG2000 - Pumped

Quantity:

1

No.

Manufacturer:

Tristel

Serial No:

Not available

~

Condition Rating:

**Grade B**

See section 1.4.1 for grading details

Priority Grading:

**Priority 4**

See Section 1.4.2 for details

Economic Life:

**20**

Year

From new/installation assuming regular servicing/maintenance

Predicated Future Life:

**5**

Years

Comments:

**No evident change since last survey in 2015**